

PERIMETER

SURVEYING & MAPPING

Prepared by: Jeff S. Hodapp, P.S.M.
Certificate of Authorization No. LB7264
951 Broken Sound Parkway, Suite 320
Boca Raton, Florida 33487
Tel: (561) 241-9988
Fax: (561) 241-5182

LEGEND:

- SET P.R.M. (UNLESS OTHERWISE NOTED) - ALUMINUM DISK
- STAMPED *LB7264
- 4"X4" CONC. MON.
- ⊕ CENTERLINE

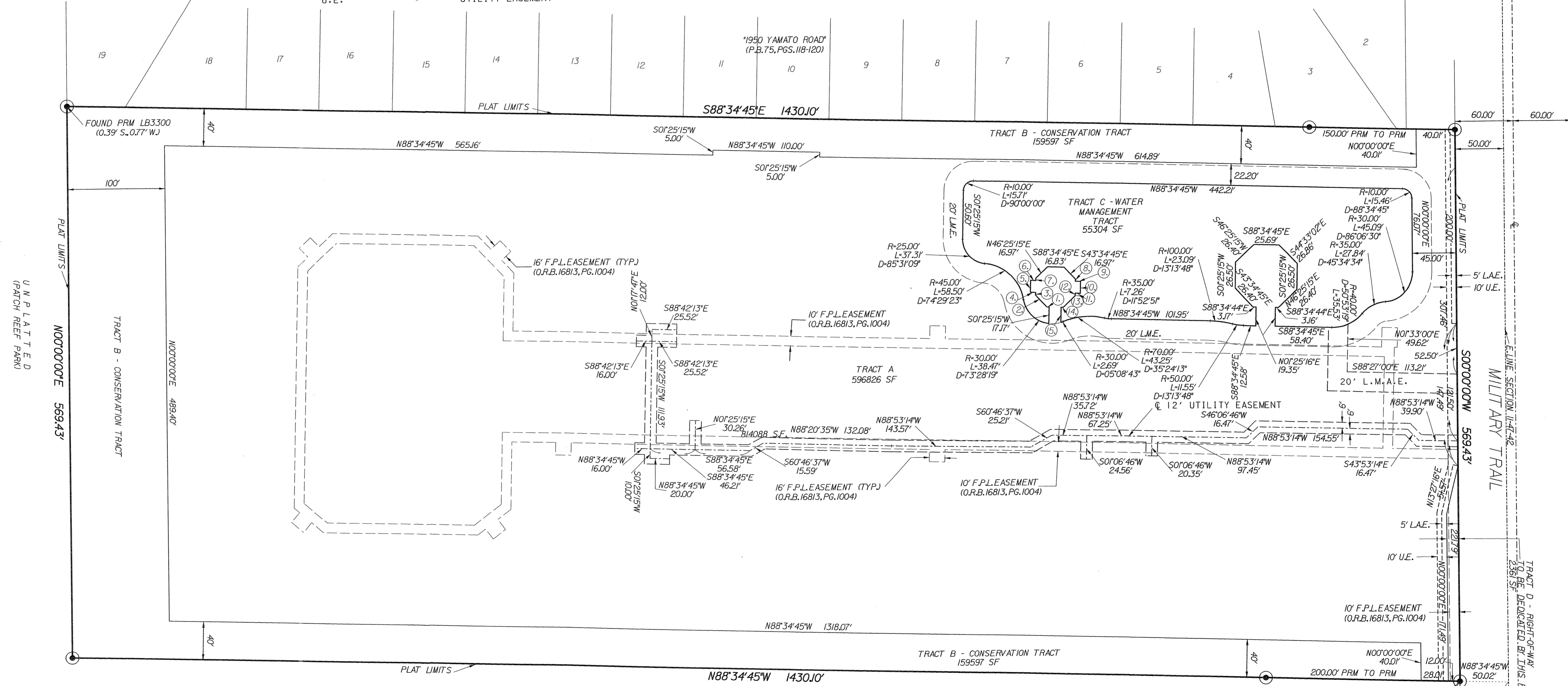
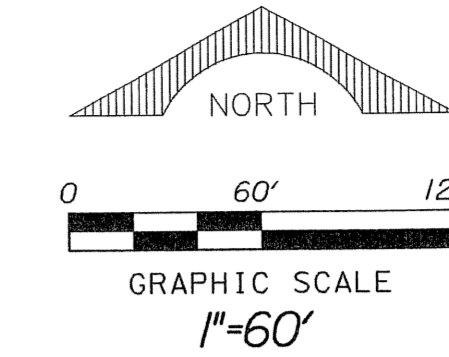
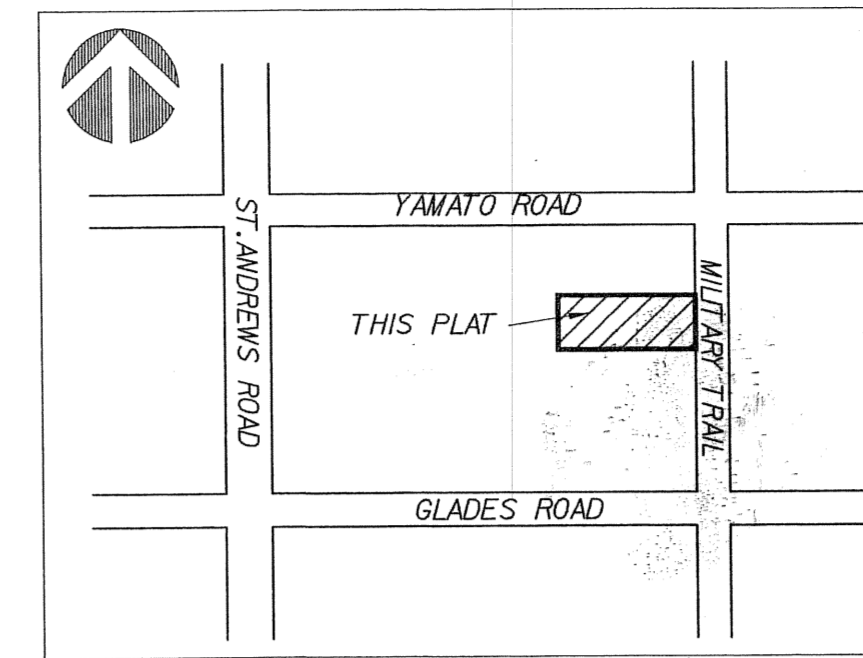
ABBREVIATIONS:

- CONC. COR.
- D
- D.E.
- I.R.
- I.R.C.
- L
- L.B.
- L.B.E.
- L.M.E.
- L.M.A.E.
- L.S.
- MON.
- O.R.B.
- N.R.
- N.R.
- P.B.
- P.B.C.R.
- PG.
- P.C.P.
- P.O.B.
- P.R.M.
- P.S.M.
- R
- R.E.
- R/W
- SEC.
- S.F.
- U.E.

- CONCRETE CORNER
- DELTA (CENTRAL ANGLE)
- DRAINAGE EASEMENT
- IRON ROD
- IRON ROD AND CAP
- ARC LENGTH
- LICENSED BUSINESS
- LANDSCAPE BUFFER EASEMENT
- LAKE MAINTENANCE EASEMENT
- LAKE MAINTENANCE ACCESS EASEMENT
- LICENSED SURVEYOR
- MONUMENT
- OFFICIAL RECORDS BOOK
- NON-RADIAL
- PLAT BOOK
- PALM BEACH COUNTY RECORDS
- PAGE
- PERMANENT CONTROL POINT
- POINT OF BEGINNING
- PERMANENT REFERENCE MONUMENT
- PROFESSIONAL SURVEYOR & MAPPER
- RADIUS
- ROADWAY EASEMENT
- RIGHT-OF-WAY
- SECTION
- SQUARE FEET
- UTILITY EASEMENT

AREA TABLE:

TRACT A	596,826 SF
TRACT B (BUFFER)	159,597 SF
TRACT C (LAKE)	55,304 SF
TRACT D (RIGHT-OF-WAY)	2,361 SF
TOTAL	814,088 SF



LINE TABLE

1.	S88°34'45"E	2.28'
2.	S43°34'45"E	16.91'
3.	S01°25'15"W	2.48'
4.	N88°34'45"W	5.33'
5.	S01°25'15"W	12.00'
6.	N88°34'45"W	5.33'
7.	S01°25'15"W	2.30'
8.	S01°25'15"W	2.30'
9.	S88°34'45"E	5.33'
10.	S01°25'15"W	12.00'
11.	S88°34'45"E	5.33'
12.	S01°25'15"W	2.48'
13.	N46°25'15"E	16.91'
14.	S88°34'45"E	2.31'
15.	S01°25'15"W	15.78'

POINT OF COMMENCEMENT
S.E. COR.
SEC. 11-47-42